

AREA LEGEND:

SITE AREA (TO OUTSIDE OF BUND)	55,918m ²
SITE AREA (LESS ROOFED AREA)	39,595m ²
PLANT & STORAGE BUILDING	14,280m ²
WATER TREATMENT BUILDING	1,022m ²
LABORATORY BUILDING	378m ²
OFFICE BUILDING	643m ²

VOLUME LEGEND:

TREATED WATER POND	35.0m(L)x10.8m(W)x3.0m(D)	1,134m ³
PLANT WATER POND	28.0m(L)x21.0m(W)x3.0m(D)	1,764m ³
STORM WATER POND No.1	35.0m(L)x16.0m(W)x3.0m(D)	1,680m ³
STORM WATER POND No.2	35.0m(L)x16.0m(W)x3.0m(D)	1,680m ³
STORM WATER POND No.3	25.0m(L)x13.0m(W)x3.0m(D)	975m ³
SITE WATER POND	28.0m(L)x32.0m(W)x3.0m(D)	2,688m ³
EMERGENCY SITE WATER POND No.1	51.0m(L)x16.0m(W)x3.0m(D)	2,448m ³
EMERGENCY SITE WATER POND No.2	51.0m(L)x16.0m(W)x3.0m(D)	2,448m ³
EMERGENCY SITE WATER POND No.3	40.0m(L)x13.0m(W)x3.0m(D)	1,560m ³

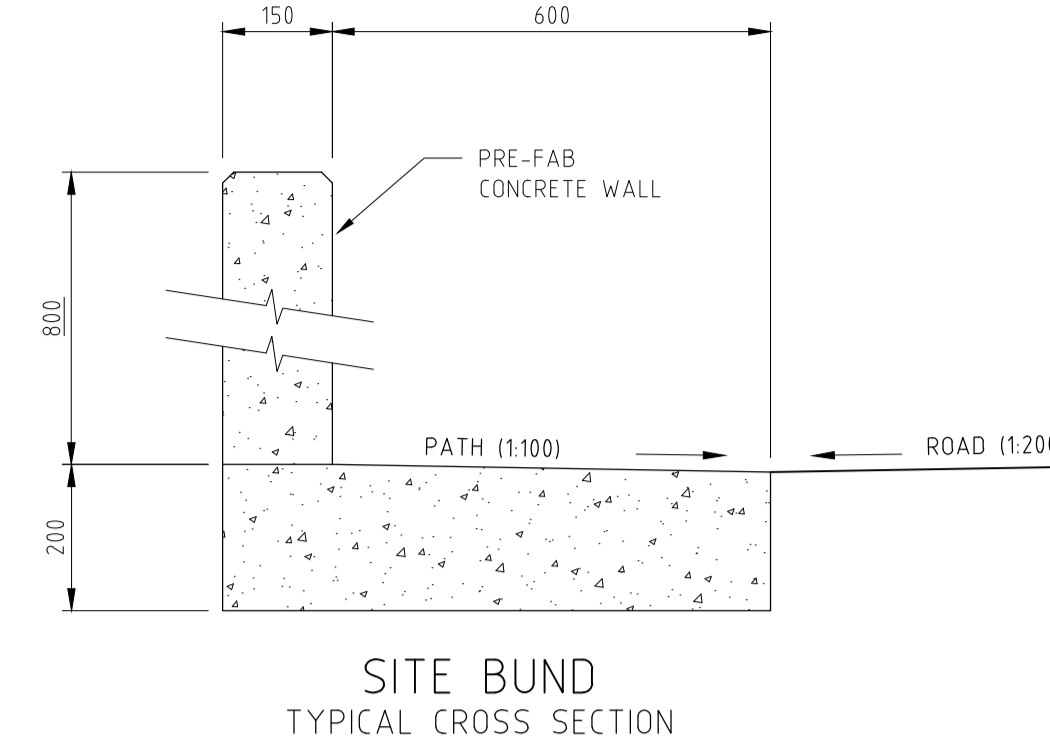
NOTE: ALL DEPTHS ARE CALCULATED FROM OVERFLOW POINT OF TANK

NOTES:

- RAINWATER FROM ROOF-TOP COLLECTION TO BE PROCESSED AS STORMWATER. ALL OTHER SITE RUN-OFF WATER TO BE PROCESSED AS WASTEWATER.

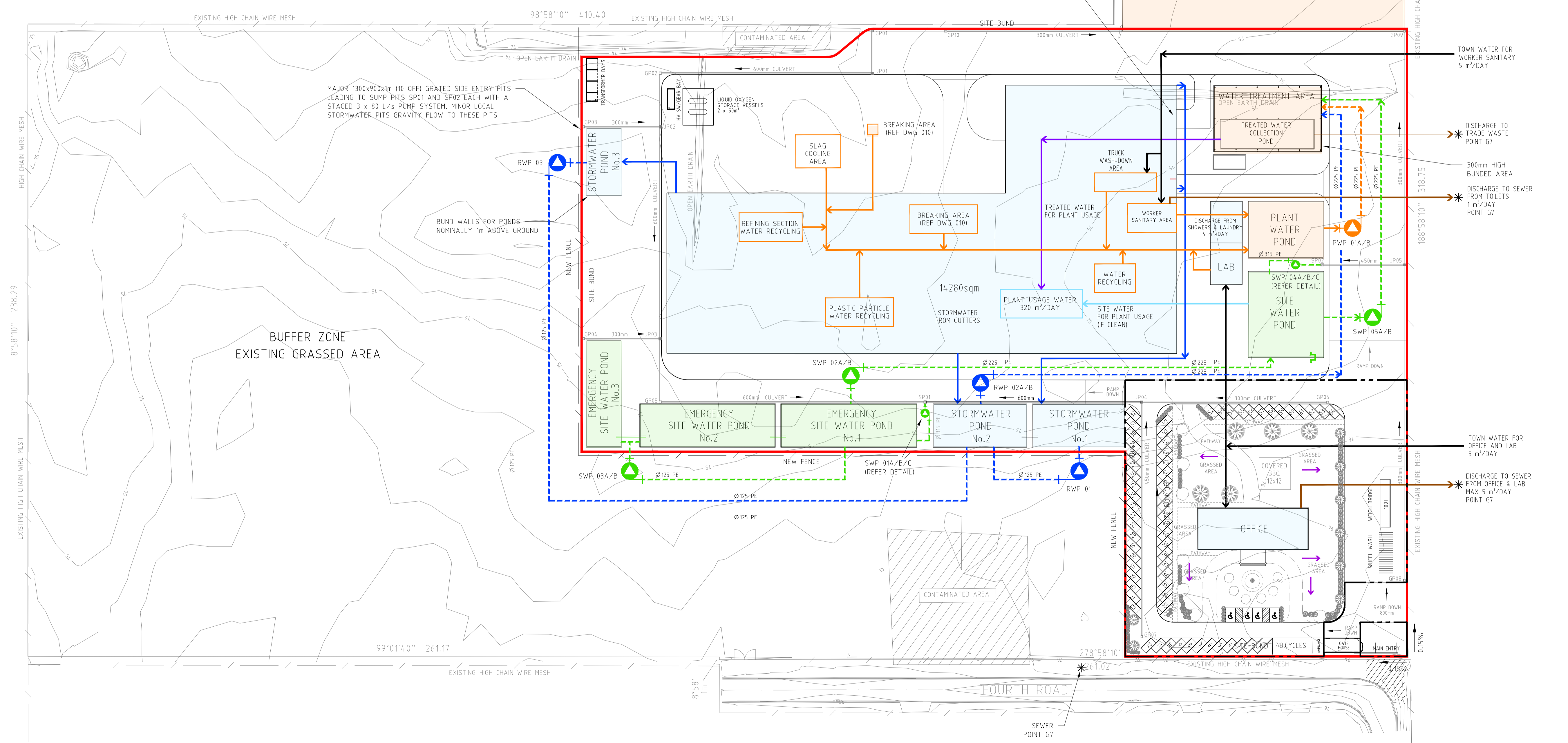
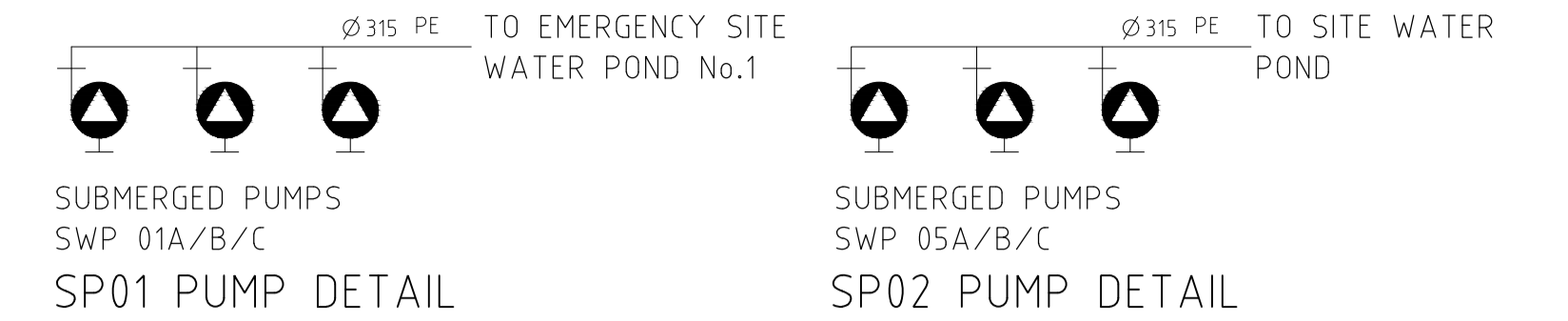
LEGEND

- SITE AREA RAINWATER COLLECTION. CONTAINED WITHIN SITE BUNDED AREA. DIVERTED TO SITE WATER STORAGE POND
- ROOFTOP RAINWATER COLLECTION AREAS. DIVERTED TO STORMWATER STORAGE POND
- PLANT WASH-DOWN AND RECYCLED WATER. DIVERTED TO PLANT WATER STORAGE POND VIA BIO FILTER AS REQUIRED.
- GPxx GRATED PIT
- SPxx SUMP PITS WITH SUBMERGED PUMP DISCHARGE
- JPxx JUNCTION PIT
- CONCRETE CULVERT WITH FIBREGLASS GRATING - DEPTH VARIES FLOW IN DIRECTION OF ARROW. WIDTHS AS NOTED
- PUMPED
- POND BALANCE PIPE. TOP OF PIPE RL 50mm BELOW SURFACE LEVEL
- GARDEN RAINWATER GRAVITY FEED



SITE BUND TYPICAL CROSS SECTION

NOTE: PLANT AREAS ISOLATED BY CONCRETE BUND WALLS AND TRAFFIC HUMPS TO ENSURE SEPARATION OF PLANT WATER AND SITE WATER SYSTEMS



MAJOR 1300x900x1m (10 OFF) GRATED SIDE ENTRY PITS LEADING TO SUMP PITS SP01 AND SP02 EACH WITH A STAGED 3 x 80 L/s PUMP SYSTEM. MINOR LOCAL STORMWATER PITS GRAVITY FLOW TO THESE PITS

BUND WALLS FOR PONDS NOMINALLY 1m ABOVE GROUND

BUFFER ZONE EXISTING GRASSED AREA

CONTAMINATED AREA

OFFICE

LABORATORY

PLANT WATER POND

SITE WATER POND

WATER TREATMENT AREA

TREATED WATER COLLECTION POND

SLAG COOLING AREA

PLASTIC PARTICLE WATER RECYCLING

PLANT USAGE WATER 320 m³/DAY

WATER RECYCLING

TRUCK WASH-DOWN AREA

WORKER SANITARY AREA

DISCHARGE FROM SHOWERS & LAUNDRY 4.5 m³/DAY

DISCHARGE TO TRADE WASTE POINT G7

DISCHARGE TO SEWER FROM TOILETS 1 m³/DAY POINT G7

TOWN WATER FOR WORKER SANITARY 5 m³/DAY

TOWN WATER FOR OFFICE AND LAB 5 m³/DAY

DISCHARGE TO SEWER FROM OFFICE & LAB MAX 5 m³/DAY POINT G7

REV	DATE	DESCRIPTION	CHKD	APP
14	14.05.21	REVISED STORMWATER PIT LOCATIONS	-	-
19	16.08.21	ADDED TRANSFORMER AND HV ELEC BAY. REMOVED BIO TREATMENT AREA	-	-
18	23.06.21	ADDED JUNCTION PIT No.s. ADDED SITE WATER & PLANT WATER PUMPS	-	-
17	02.06.21	ADDED JUNCTION PITS. REMOVED PUMPED LINE FROM EM POND 3 TO SW POND 2	-	-
16	26.05.21	REVISED PUMP SYSTEM BETWEEN PONDS	-	-
15	25.05.21	ADDED RAMPED AREA AT SITE ENTRY POINT	-	-

REV	DATE	DESCRIPTION	CHKD	APP
14	14.05.21	REVISED STORMWATER PIT LOCATIONS	-	-
19	16.08.21	ADDED TRANSFORMER AND HV ELEC BAY. REMOVED BIO TREATMENT AREA	-	-
18	23.06.21	ADDED JUNCTION PIT No.s. ADDED SITE WATER & PLANT WATER PUMPS	-	-
17	02.06.21	ADDED JUNCTION PITS. REMOVED PUMPED LINE FROM EM POND 3 TO SW POND 2	-	-
16	26.05.21	REVISED PUMP SYSTEM BETWEEN PONDS	-	-
15	25.05.21	ADDED RAMPED AREA AT SITE ENTRY POINT	-	-

CHUNXING CORPORATION PTY LTD

DRAWN NB/Pd
DATE 10/2019
CHECKED GC/PL
APPROVED

Pro Draft
ENGINEERING DRAFTING
PHONE (03) 5133 8007
FAX (03) 5133 6961

DRG No. PD2019-0084-002

CHUNXING CORPORATION
BATTERY RECYCLING FACILITY
FOURTH ROAD, HAZELWOOD NORTH
PROPOSED WATER MANAGEMENT SYSTEM

REV 19

THIS DRAWING AND ALL TECHNICAL DATA CONTAINED HEREIN IS THE PROPERTY OF CHUNXING CORPORATION AND MUST NOT BE DISCLOSED TO THIRD PARTIES, OR COPIED, OR REPRODUCED WHOLLY, OR IN PART, OR IN ANY FORM WITHOUT THE WRITTEN CONSENT OF THE OWNERS.