

COMPONENTS

MK1 – SHAKER GRID SCREEN	4 OFF
MK2 – PLATE	4 OFF
M20x50mm GALV	40 OFF
M20x180mm GALV	8 OFF
1200x1200x300 CULVERT	4 OFF
16mm STRUCTURAL PLY 1200x2400	8 OFF

OPERATING PROCEDURE

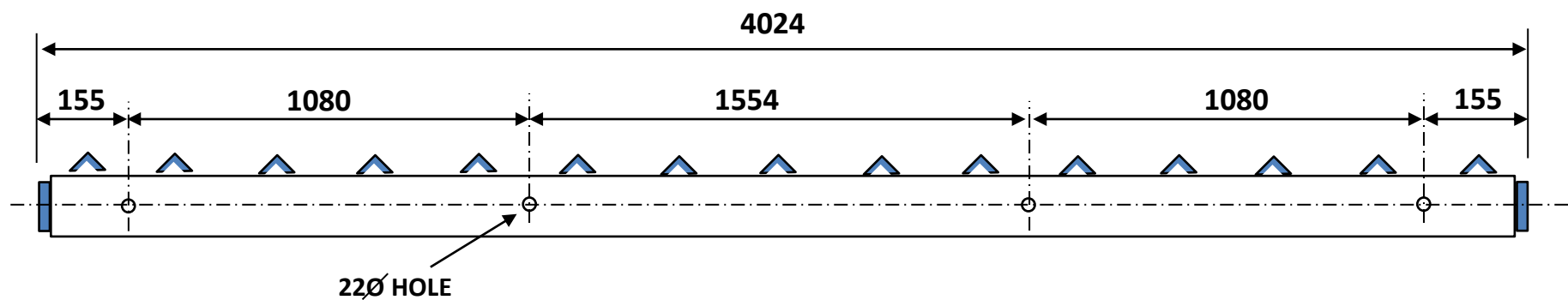
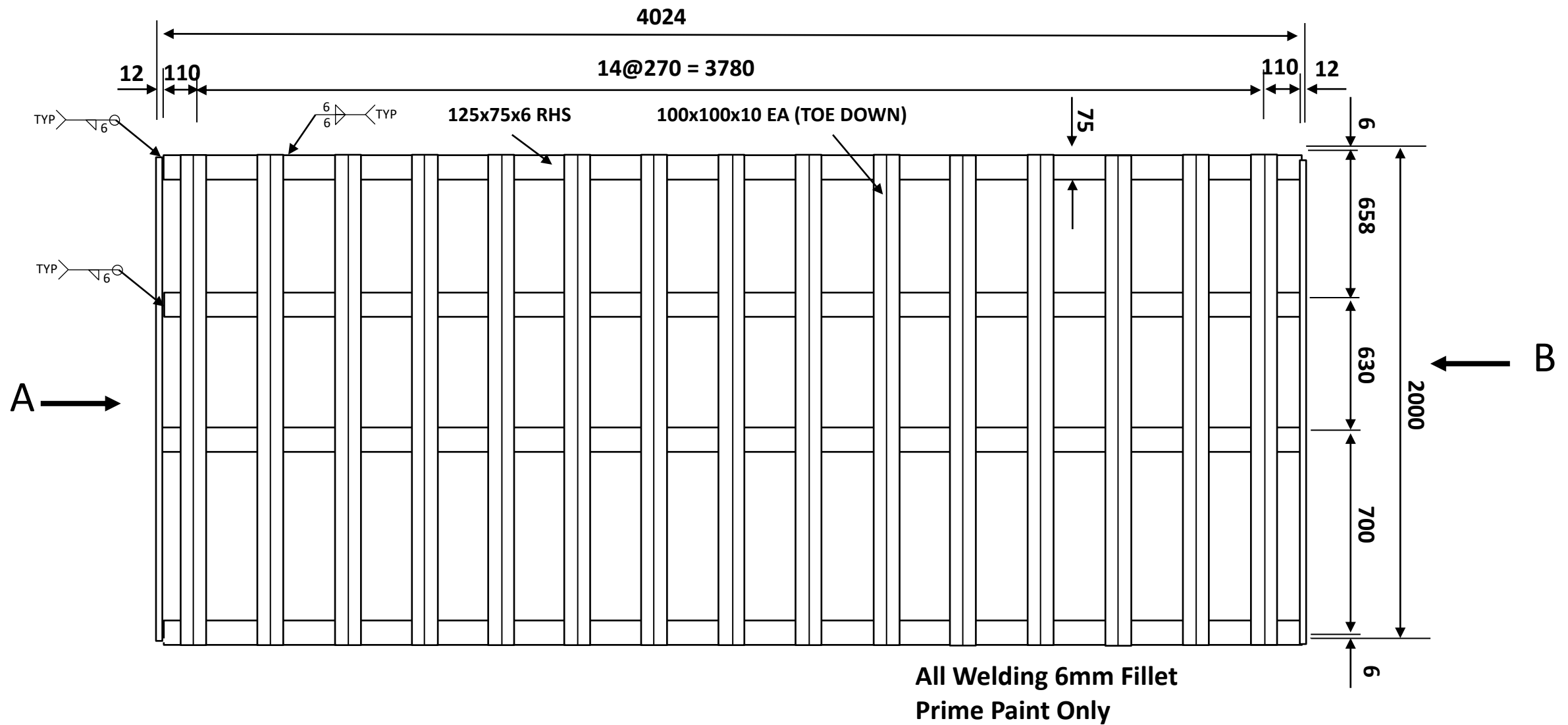
Trucks leaving the Construction Site pass over the SHAKER GRID supported on rocks to shake the Truck Body to remove loose dirt..

The Truck then passes onto the WHEEL WASH where low pressure spray nozzles turn on and wash the underside of the truck and wheels
Truck then drives over rocks to shake off loose water before leaving Site

The SHAKER GRID will be removed regularly to remove silt and reposition the rocks

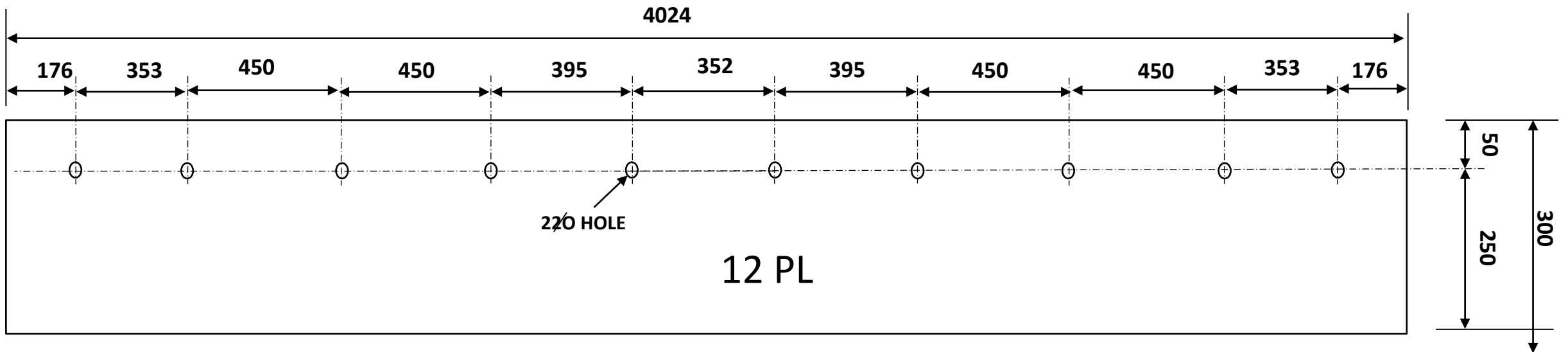
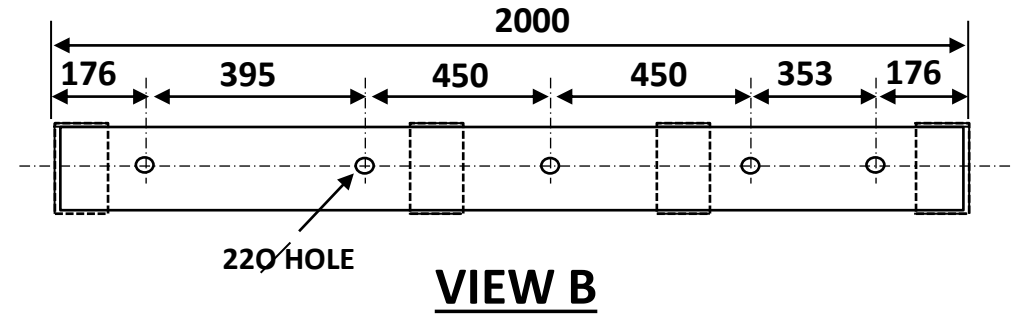
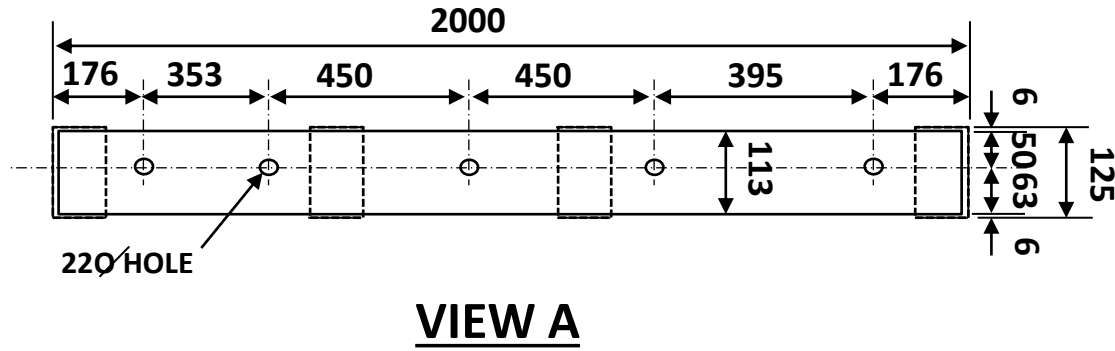
The WHEEL WASH will be pumped out into the SITE CONSTRUCTION POND when water level is half the depth of the Fibreglass Pond

Sketch-001 – ULAB Shaker Grid / Wheel Wash Assembly



MK1 - SHAKER GRID SECTION (4 OFF REQUIRED)

Sketch-002 – ULAB Shaker Grid Section



MK1 - PLATE

(4 OFF REQUIRED)

Prime Paint Only

Sketch-003 – ULAB Shaker – MK1, Grid Details