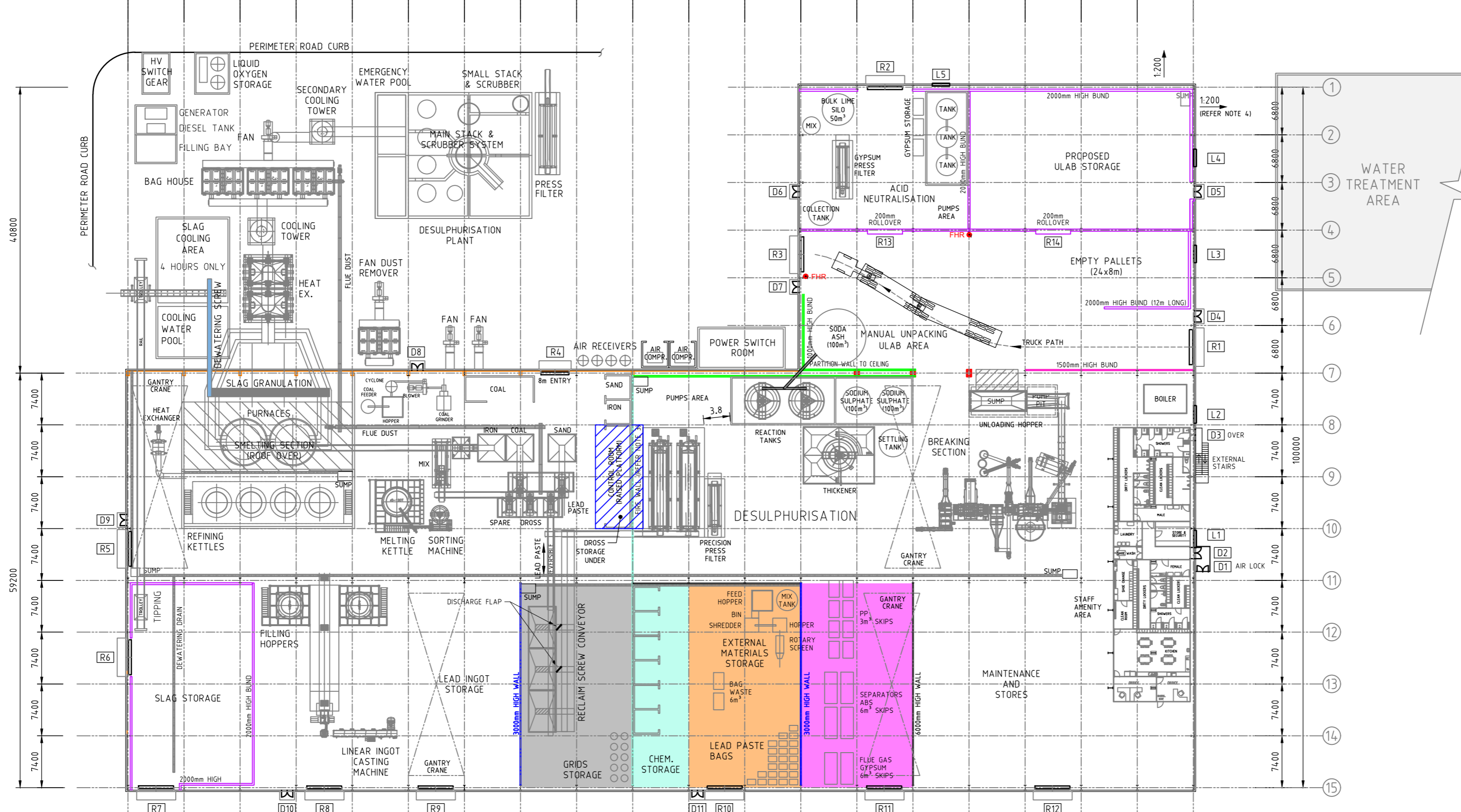


1 2 3 4 5 6 7 8

T S R Q P O N M L K J I H G F E D C B A



DOOR SCHEDULE	
D1	1640x2040 DOUBLE SELF CLOSING PEDESTRIAN DOORS (AIR LOCK TO CHANGE RM)
D2	1640x2040 DOUBLE SELF CLOSING PEDESTRIAN DOORS
D3	1640x2040 DOUBLE SELF CLOSING PEDESTRIAN DOORS (AIR LOCK @ RL 5000)
D4	1640x2040 DOUBLE SELF CLOSING PEDESTRIAN DOORS
D5	1640x2040 DOUBLE SELF CLOSING PEDESTRIAN DOORS
D6	1640x2040 DOUBLE SELF CLOSING PEDESTRIAN DOORS
D7	1640x2040 DOUBLE SELF CLOSING PEDESTRIAN DOORS
D8	1640x2040 DOUBLE SELF CLOSING PEDESTRIAN DOORS
D9	1640x2040 DOUBLE SELF CLOSING PEDESTRIAN DOORS
D10	1640x2040 DOUBLE SELF CLOSING PEDESTRIAN DOORS
D11	1640x2040 DOUBLE SELF CLOSING PEDESTRIAN DOORS
L1	2500w x 2000h LOUVRE VENT (11m FLOOR TO BOTTOM)
L2	2500w x 2000h LOUVRE VENT (11m FLOOR TO BOTTOM)
L3	2500w x 2000h LOUVRE VENT (6m FLOOR TO BOTTOM)
L4	2000w x 1000h LOUVRE VENT (6m FLOOR TO BOTTOM)
L5	2000w x 1000h LOUVRE VENT (6m FLOOR TO BOTTOM)
R1	5x5m ROLLER DOOR
R2	5x5m ROLLER DOOR
R3	5x5m ROLLER DOOR
R4	5x8m ROLLER DOOR (TIPPING DOOR)
R5	5x5m ROLLER DOOR
R6	5x5m ROLLER DOOR
R7	5x5m ROLLER DOOR
R8	5x5m ROLLER DOOR
R9	5x5m ROLLER DOOR
R10	5x5m ROLLER DOOR
R11	5x5m ROLLER DOOR
R12	5x5m ROLLER DOOR
R13	5x5m ROLLER DOOR
R14	5x5m ROLLER DOOR

WINDOW AND DOOR SPECIFICATIONS
 WINDOWS - CAPRAL 400 SERIES NARROWLINE ALUMINIUM FRAMED 1800Wx2400H SINGLE GLAZED WINDOWS USING AGS 400 NARROWLINE FRAMING SYSTEM
 DOORS - METAL CLAD SOLID CORE: METAL CLADDING AND CAPPING.
 DOOR FURNITURE - TO BE SPECIFIED ONCE FIRE ASSESSMENT HAS BEEN COMPLETED
 ROLLER DOORS - STEELSC100 ROLLER SHUTTER WITH 1hp MOTOR INCORPORATING STANDARD REVERSING CONTACTOR AND UP, DOWN, STOP BUTTON CONTROLLER WITH HAND CHAIN OVERRIDE


LEGEND

—	300mm HIGH BUND (100 WIDE TOP to 150 WIDE BOTTOM)
—	1000mm HIGH BUND (150 WIDE TOP to 200 WIDE BOTTOM)
—	1500mm HIGH BUND (150 WIDE TOP to 250 WIDE BOTTOM)
—	2000mm HIGH BUND (150 WIDE TOP to 300 WIDE BOTTOM)
—	3000mm HIGH BUND (150 WIDE TOP to 300 WIDE BOTTOM)
—	6000mm HIGH BUND (150 WIDE TOP to 300 WIDE BOTTOM)
—	DEWATERING DRAIN (TYP 300 WIDE)
—	FIRE PROOFING
—	PARTITION WALL

- NOTES**
- FIRE PROOFING TO BE DETERMINED AFTER STRUCTURAL ERECTION. DESIGN OF THE FIRE PROOFING MATERIALS TO BE PROVIDED BY OTHERS. TO BE INSTALLED AFTER STRUCTURAL ERECTION AS SHOWN.
 - INTERNAL PARTITIONS TO BE INSTALLED AFTER THE PLANT/EQUIPMENT IS INSTALLED. (WALLS TO BE STEEL FRAME COLORBOND CLAD INSULATED SANDWICH PANEL 75 THICK, HEIGHT TO 1m BELOW HOOK HEIGHT).
 - INTERNAL PARTITIONS TO BE INSTALLED AFTER THE PLANT/EQUIPMENT IS INSTALLED. (WALLS TO BE STEEL FRAME COLORBOND CLAD WITH SPRAYED FIRE PROOF MATERIAL SMELTER SIDE, HEIGHT TO 1m BELOW HOOK HEIGHT).
 - ALL OUTSIDE PAVEMENT TO SLOPE AWAY FROM BUILDING @1:200

DESCRIPTION	DRAWING No.

REV	DATE	DESCRIPTION	CHKD	APP
24	02.11.22	REMOVED ULAB PIT	-	-
23	25.10.22	REMOVED TRUCK WASH. REVERSED VEHICLE PATH DIRECTION	-	-
22	11.09.22	PLASTIC AREA RENAMED SORTING & GRANULATION AREA	-	-
21	01.07.22	REVISED ULAB PIT. ADDED FIRE WALL	-	-
20	20.04.22	REVISED COLUMN CENTRELINES TO CURRENT DESIGN	-	-
25	07.12.22	REVISED PLANT LAYOUT	-	-



CHUNXING CORPORATION PTY LTD

DRAWN	NB/PD
DATE	01/20
CHECKED	GC/PD
APPROVED	X

Pro Draft PTY LTD
 ENGINEERING DRAFTING
 PHONE: (03) 5133 8007
 FAX: (03) 5133 6961

DRG No. PD2019-0084-009	REV 25f
CHUNXING CORPORATION BATTERY RECYCLING FACILITY FOURTH ROAD, HAZELWOOD NORTH PLANT AREA - EQUIPMENT LAYOUT	
THIS DRAWING AND ALL TECHNICAL DATA CONTAINED HEREIN IS THE PROPERTY OF CHUNXING CORPORATION AND MUST NOT BE DISCLOSED TO THIRD PARTIES, OR COPIED, OR REPRODUCED WHOLLY, OR IN PART, OR IN ANY FORM WITHOUT THE WRITTEN CONSENT OF THE OWNERS.	

400 X 564mm

PLOT SCALE = 1:500

A2